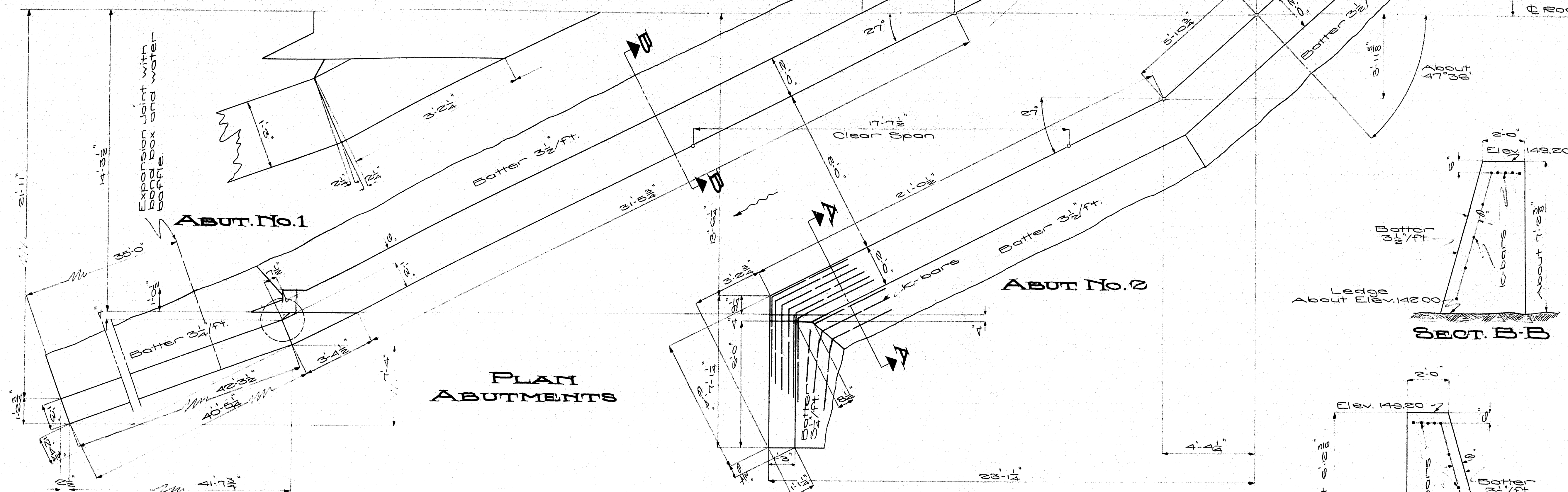
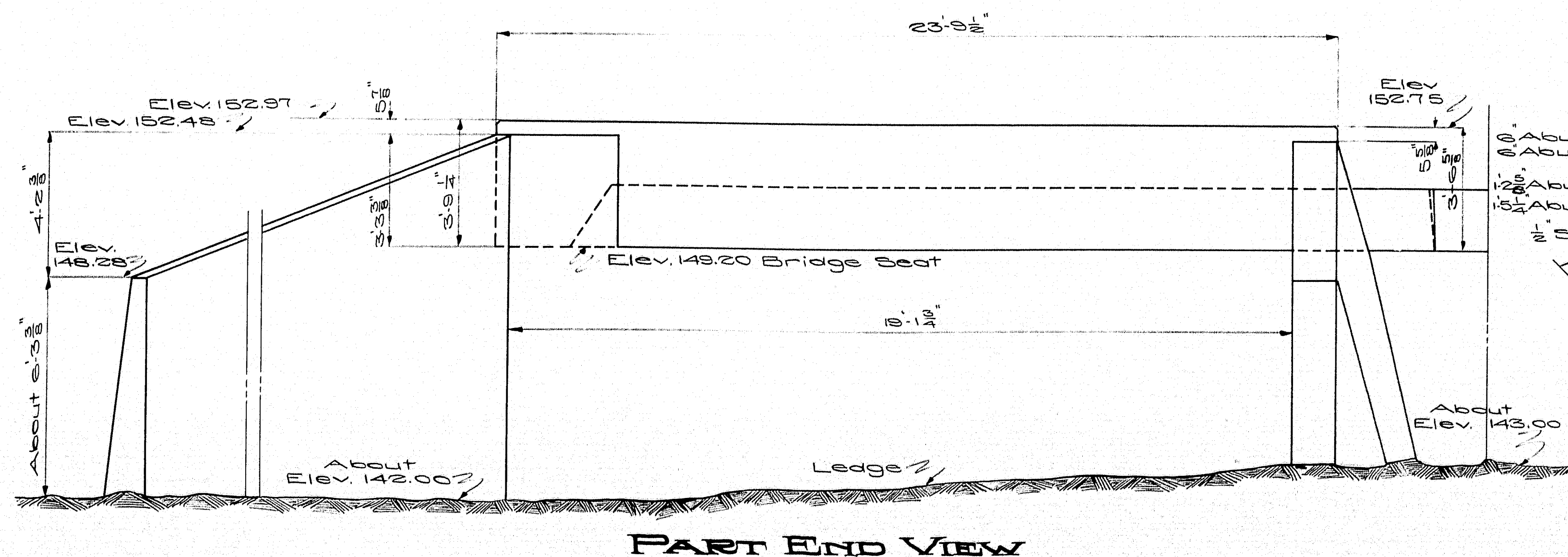


Note: K-bars to be placed at the junction of wing and breast walls spaced 4 on centers horizontally 0" below the bridge seat. Also spaced 16 vertically from back of bridge. Bend in field to fit forms.

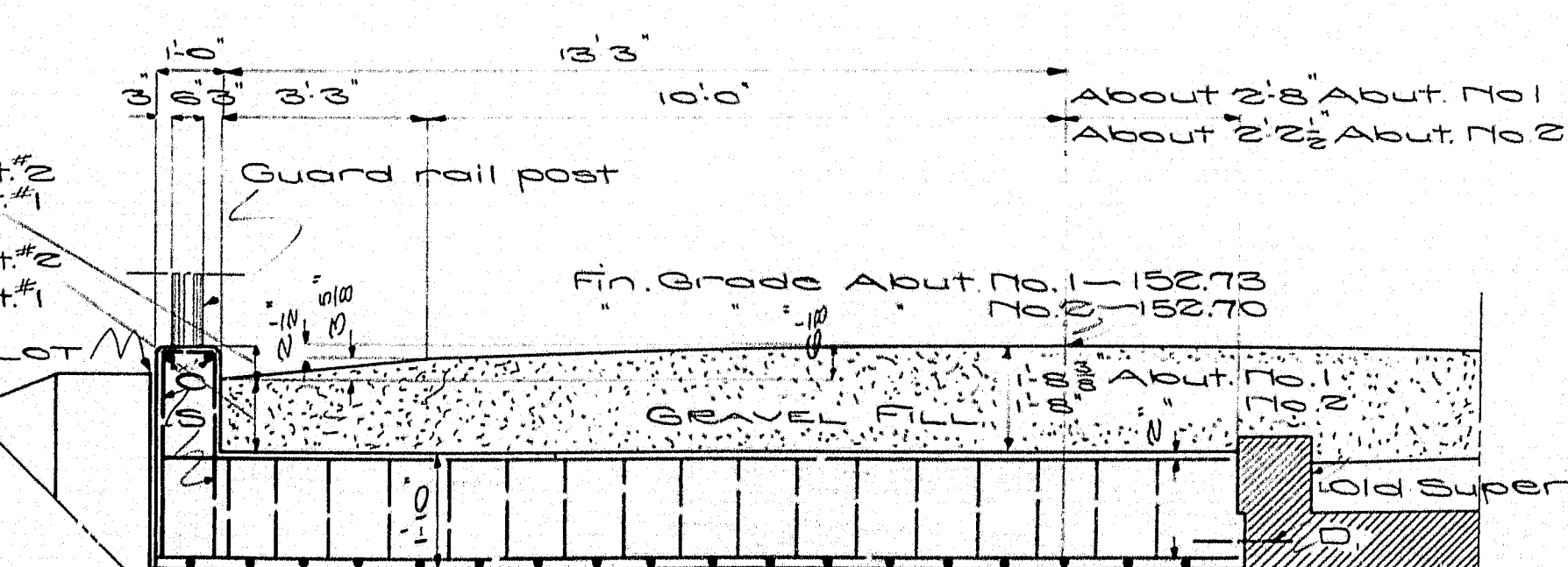
DETAIL DESIGNATED BY  
DOTTED CIRCLE



Note - Place  $\frac{1}{4}$  layer of roofing on one bridge seat only.  
Extension to expand on same end as old structure.

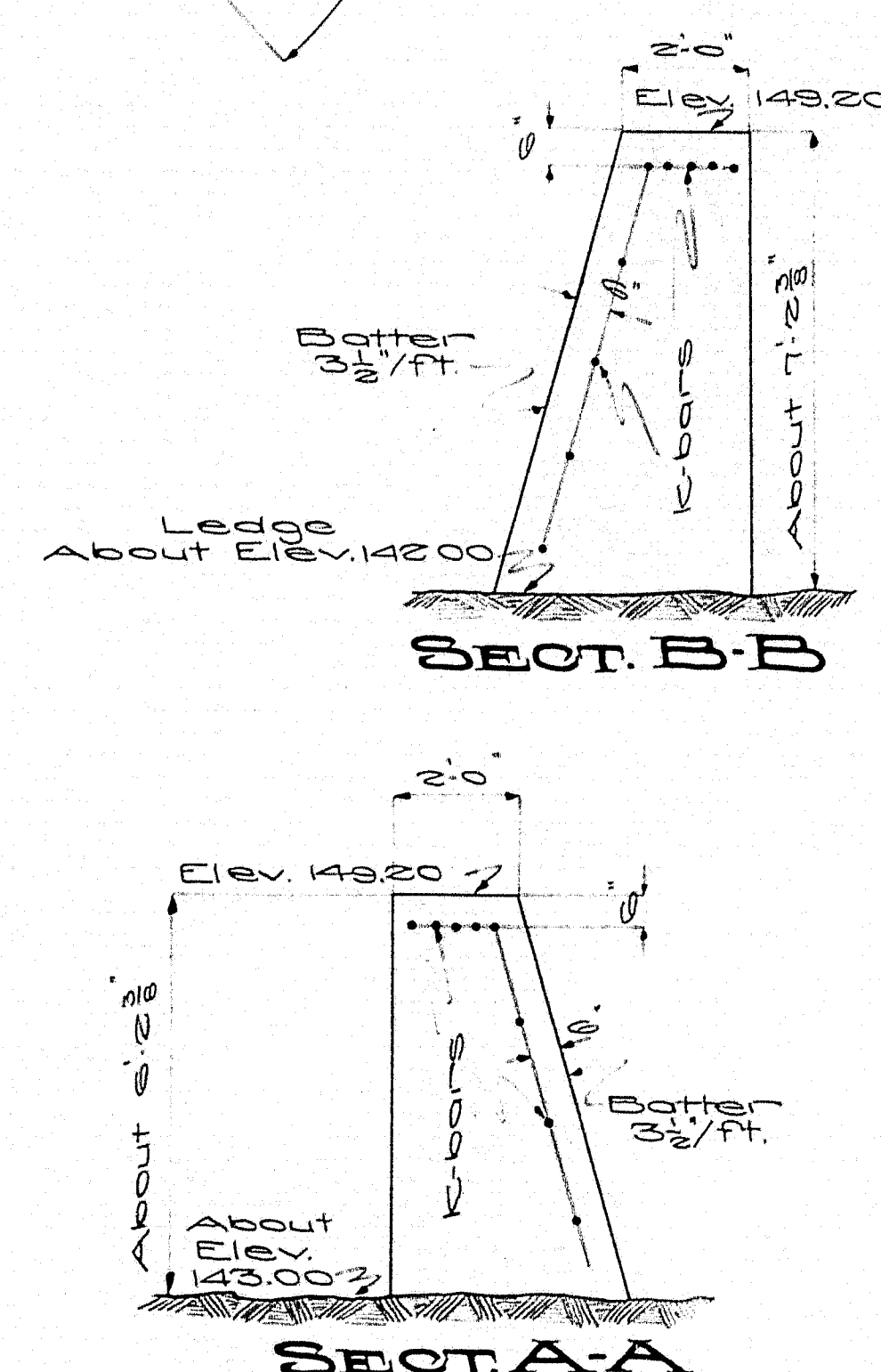


Note - Old pipe hand rail on downstream curb to be removed  
See Steel Plan Sheet No.3 for slab steel marks.



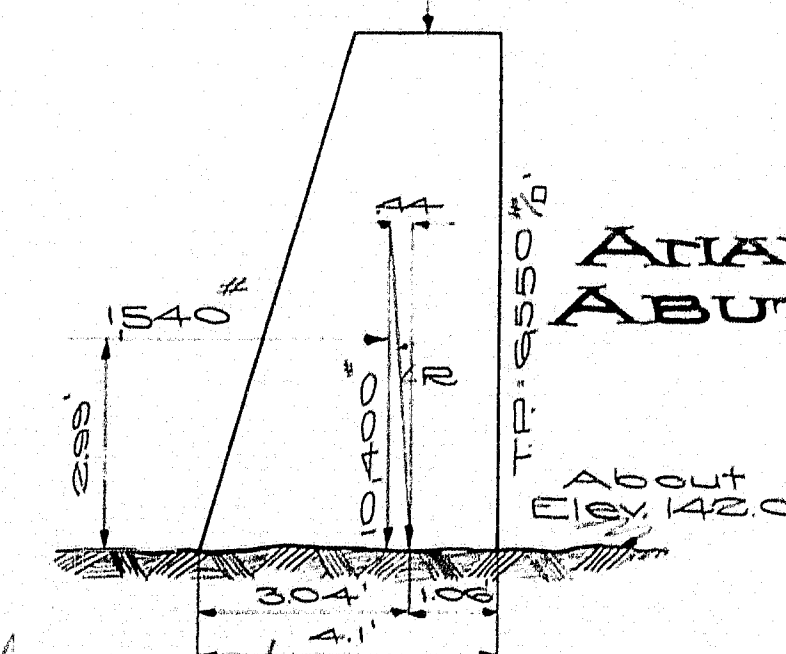
## PART TRANSVERSE SECT. SUPERSTRUCTURE

Note - Cover the  $\frac{1}{2}$  vertical slots between substructure and superstructure with two layers of heavy roofing felt. Felt to be in two layers. First surface of substructure and backside of each layer as specified with hot tar or asphalt. The area to be covered by the felt is to be recessed 1" by nailing thin strips to the forms before concrete is placed.



HALF REAR ELEV. ABOUT NO. 2 AT 15 TO 20

ANALYSIS  
ABUT. No. 1



Town - 07-02  
Bridge-2366

Maine Highway Commission  
Bridge Division

**GREAT BROOK BRIDGE**  
In the Town of  
**CAMDEN**  
**KNOX COUNTY**

**BRIDGE DETAILS**

Sheet 2 of 3 Augusta, ME. Mar. 1933

334

